


27W EERO WiFi

Challenger P/N: **PS-USBC-1527D-WM1**

Dual Output compatible with numerous Eero devices

A-1




5V 1.5A 1.35 pin

Challenger P/N: **PS-1.35-515-WT2**
PS-1.35-515-WC3

Compatible devices include:
Arris, Cisco, Pace, HD uDTAs, and Technicolor DTAs

A-2




5V 2A 1.35 / 2.5 pin

Challenger P/N: **PS-2.5-5-2WTM2**

Compatible devices include:
Amigo 7X, IPA1114HDW, IPA2112HDW

A-3



5V 3A 1.75 pin

Challenger P/N: **PS-1.75-5-3-WC3**

Compatible devices include:
Evolution Ebox, Pace Mi3 STB

A-4




5V 4A 1.75 pin

Challenger P/N: **PS-1.75-5-4WTM2**

Compatible devices include:
Arris DCX700

B-1




12V 1A 2.1 / 2.5 pin

Challenger P/N: **PS-2.1-12-1WTM**
PS-2.5-12-1WTM2

Compatible devices include:
2.1 - TIVO Mini, Arris E2700
2.5 - Arris DCT700, DCX525E, SB61xx

B-2




12V 1.5A 4.3 pin

Challenger P/N: **PS-4.3-12-15WTM1**

Compatible devices include:
IP815, IPC1100

B-3




12V 2A 2.1 / 2.5 / 3.0 pin

Challenger P/N: **PS-2.1-12-2WT2**
PS-2.5-12-2WTM2
PS-3.0-12-2WT2

Compatible devices include: TIVO Preview/Mini, Technicolor TC4400, ARRIS CM8200, UBEE 1302, Evolution eSTREAM 4K STB (Android TV), Linksys EA6350 router, Nova-2004

B-4



12V 2.5A 2.1 / 2.5 pin

Challenger P/N: **PS-2.5-12-25WT3**

Compatible devices include:
CDA3.35/CDA3, CGN3/CGNM, TP Link C7, Arris MG2 (DCX900), Hitron, Arris TM3402

C-1



12V 2.67A 2.1 pin

Challenger P/N: **PS-2.1-12-267DT1**

Compatible devices include:
DCX 3200 STB, DCX3510, DCX3520 STB

C-2




12V 3A 2.1 pin

Challenger P/N: **PS-2.1-12-3DT1**

Compatible devices include:
PACE MG1 STB, Arris/Technicolor XG1, XG2 STB

C-3



12V 3A 2.5 pin

Challenger P/N: **PS-2.5-12-3WT4** (Wall-Mount)
PS-2.5-12-3DT1 (Desk-Top)

Compatible devices include:
Arris DG3450, VMG4825, Cisco 8742HDC, 9865HDC

C-4




12V 3.5A 2.0 pin

Challenger P/N: **PS-2.0-12-35WT2**

Compatible devices include:
Mini Box V1, V2, V3, TCG310

D-1



12V 4.5A 2.5 pin

Challenger P/N: **PS-2.5-12-45WTM1**
PS-2.5-12-45DT1

Compatible devices include:
CGA4231/4234, C4000XG, CODA 55xx/56xx/57xx/58xx, DG6450/9450, TG3452/6452/9452

D-2



14V 2.5A 4.3 pin

Challenger P/N: **PS-4.3-14-25DT1**

Compatible devices include:
GXMC990CL

D-3



15V 1.6A 1.75 pin

Challenger P/N: **PS-1.75-15-16DT1**

Compatible devices include:
CISCO DPC3825/3827/3925

D-4

also available:



PoE Injectors

RCN # -
Challenger # **PoE-48-24W-G**
Description 24W PoE Injector w/ Pwr Cord

RCN # -
Challenger # **POE-56-30W-G**
Description 30W PoE Injector w/ Pwr Cord

E-1



HDMI Cables

Challenger # **HDMI-MMXX**
HDMI 2.0, Premium Certified Available in 6ft, 10ft lengths

E-2

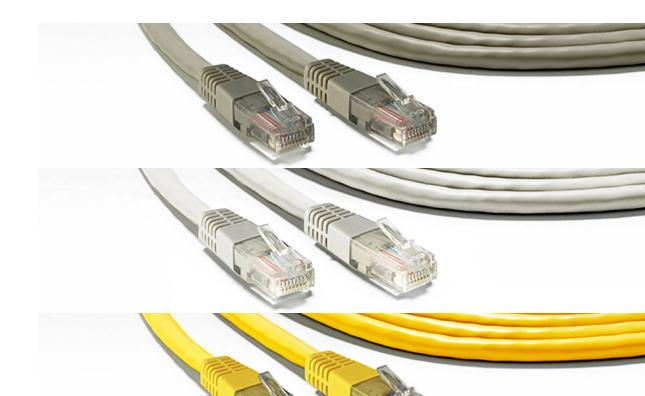


Power Cord

Challenger # **AC-CORD-10A** (Polarized)
Description 6ft. AC for Motorola STB

Challenger # **PWR-CORD-502A** (Non-Polarized)
Description 6ft. 2 conductor for TIVO STB

E-3

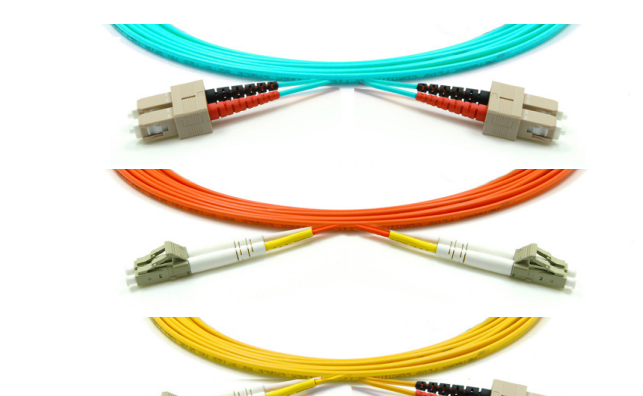


CAT5e / CAT6 Cables

Challenger # **C5-507XX**
Challenger # **C6-606XX**
Description CAT5e and CAT6, 6ft, Patch Cords

Available in Grey, Orange, White or Yellow

E-4



Fiber Patch Cords

Complete line of fiber optic jumpers in single-mode and multimode configurations

E-5



HDMI Conversion

Challenger # **HDMI-RGBA-CNV**
Description: HDMI to YPbPr Conversion, HD Video

Challenger # **HDMI-SVCR-CNV**
Description: HDMI to A/V Composite Conversion, SD Video

E-6



Category Cable (Bulk)

Challenger # **C5-783x**
Description CAT5e, CAT6 and CAT6A, CMR, CMX, Plenum, available in various colors, 1000ft Box or Reels

E-7



Y-Splitter Ext Cord

Challenger # **PWR-CORD-Y**
Description 14 inch, Y-Splitter Power Cord, Extension

E-8



Lithium Batteries

Description Lithium Batteries
Cell Types: AA, CR2, CR123, CR2025, CR2032, CR2450

E-9



Rayovac Alkaline

Description Alkaline Batteries
Cell Types: AA, AAA, C, D,9V

E-10